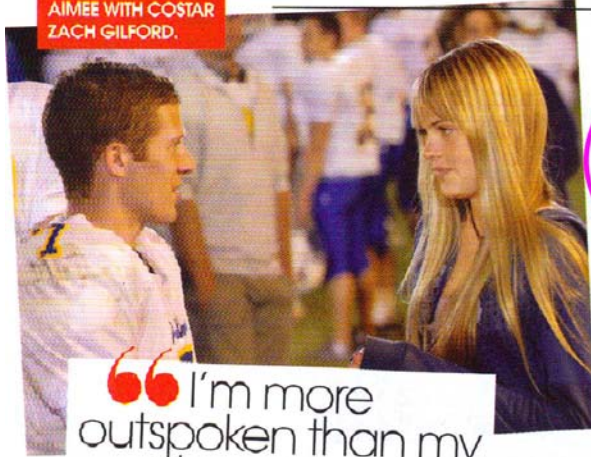


# BEAUTY & HEALTH

FIELD OF DREAMS  
AIMEE WITH COSTAR  
ZACH GILFORD.



“I’m more outspoken than my character—I have an opinion on everything!”

get bored of it,” she says, “but I really wanted to act. Seven years later, I’m still in the business!” With only commercials and smaller roles under her belt, she landed the part of Julie Taylor, daughter of the football coach and girlfriend of the quarterback on *Friday Night Lights*. Lately, she’s found that she and her character have more in common than she thought. “I’m more outspoken than Julie is,” she admits, “but I can relate to all the high school ‘firsts’ she’s going through: first boyfriend, fights with parents, all that stuff.”

And Aimee’s beauty routine doesn’t differ from that of a normal high school student either. She prefers to keep it simple, favoring Stila fruit-punch-flavored lip gloss and John Frieda’s Sheer Blonde shampoo and conditioner, because it keeps her hair “sleek and shiny.” When asked about her favorite shops, Aimee doesn’t hesitate: “Sephora,” she says definitively. “I’m a Sephora kind of girl.”



Despite her growing fame, Aimee is not immune to the trappings of true stardom. “It’s weird when someone wants my autograph,” she says, “but I’ve had people come up to me because *Friday Night Lights* and I. We deal with their issues. It’s so funny. It’s solved with a show like this—but it’s not!” —SARAH JENKS-DALY

## aimee’s essentials

- 1 TOO FACED LASH INJECTION MASCARA BUILDS TEXAS-SIZE VOLUME. \$20, SEPHORA.
- 2 BENEFIT BENETINT CREATES SWEET ROSY CHEEKS. \$28, BENEFITCOSMETICS.COM.
- 3 HOLLISTER CO. RYDER PERFUME “SMELLS SO BEACHY!” \$20 FOR 1 OZ., HOLLISTER CO.
- 4 ONE SWEEP OF URBAN DECAY EYE SHADOW IN HALF BAKED LEAVES LIDS GOLDEN. \$16, ULTA.
- 5 SMASHBOX COSMETICS DEFINER BRUSH ACCENTUATES EYES. \$28, SMASHBOX.COM.
- 6 STILA LIP GLAZE IN FRUIT PUNCH IS THE PERFECT POP OF COLOR. \$20, SELECT BLOOMINGDALE’S.
- 7 JOHN FRIEDA SHEER BLONDE CONDITIONER “MAKES MY HAIR SLEEK AND SHINY.” \$7, CVS.

Clockwise from top left: VAN REDIN/NBC/ Everett Collection; JOSHUA SCOTT; LUCAS VISSER (2) VAN REDIN/NBC/ Everett Collection; JOSHUA SCOTT; LUCAS VISSER (3) VAN REDIN/NBC/ Everett Collection; JOSHUA SCOTT; LUCAS VISSER (4) VAN REDIN/NBC/ Everett Collection; JOSHUA SCOTT; LUCAS VISSER (5) VAN REDIN/NBC/ Everett Collection; JOSHUA SCOTT; LUCAS VISSER (6) VAN REDIN/NBC/ Everett Collection; JOSHUA SCOTT; LUCAS VISSER (7) VAN REDIN/NBC/ Everett Collection; JOSHUA SCOTT; LUCAS VISSER